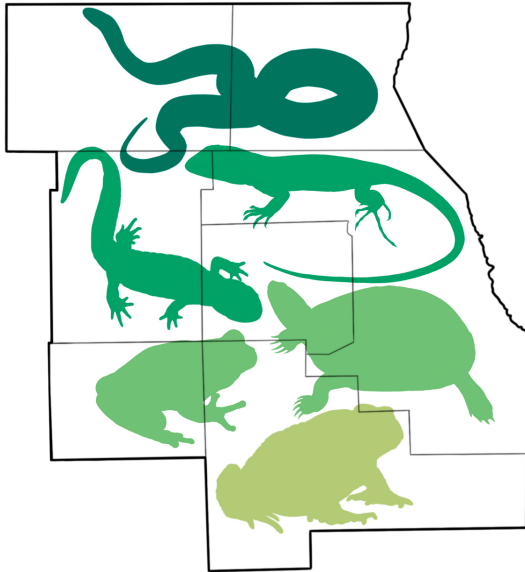


# COMMON REPTILES & AMPHIBIANS OF CHICAGOLAND



A GUIDE TO THE COMMON  
REPTILES AND AMPHIBIANS OF  
THE ILLINOIS COUNTIES OF  
COOK, DuPAGE, LAKE,  
McHENRY, KANE, KENDALL,  
& WILL



## SPOTTED SALAMANDER

*Ambystoma maculatum* **M**



- Dark brown or black body with two rows of yellow-orange spots; slate gray-black belly, sometimes with white flecks
- Forests near swamps or ponds

## GREEN FROG

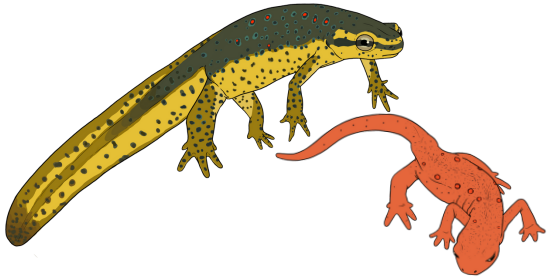
*Lithobates clamitans* **M L**



- Bronzy green with black and brown blotches
- Dorsolateral folds running from large, circular elevated tympanums
- Shorelines of ponds, marshes, streams

## EASTERN NEWT

*Notophthalmus viridescens* **S**



- Olive green with black-bordered red spots, with lighter, yellow belly scattered with black spots; bright orange-red during juvenile stage
- Ponds, small lakes, and streams near forests

## NORTHERN LEOPARD FROG

*Lithobates pipiens* **M**



- Tan, green, or brown with pale dorsolateral folds, and dark dorsal spots
- Ponds and marshes, but may venture into grasslands during summer months

## AMERICAN TOAD

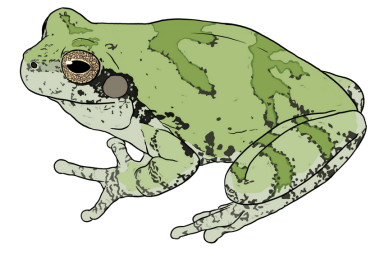
*Anaxyrus americanus* **M L**



- Brown, gray, reddish-brown, or olive colored with numerous dark spots and warts; large protruding gland behind each eye
- Forests or grasslands near shallow sources of water

## GRAY TREEFROG

*Dryophytes versicolor* **S**



- Green, gray, or brown warty skin; light spot under each eye with dark stripe from the rear of the eye to the front legs; yellow groin and inner-thigh
- Woodlands or forests near water; arboreal

## EASTERN MASSASAUGA

*Sistrurus catenatus* **M**

State Endangered

**VENOMOUS**



- Uncommon, mostly **extirpated** in Chicagoland area
- Light brown or gray, stout body with "bowtie"-shaped brown blotches
- Heart-shaped head with narrow, white stripe from eye to jaw; cat-eyed pupils
- 2-3 rows of round, dark spots on sides, and 4-7 dark rings around tail; small rattle on tail tip
- Floodplain forests, old fields, marshlands

ADULT SIZE QUANTIFICATIONS (inches)			
SNAKES		TURTLES	
<b>S</b> SMALL: 0 - 22		<b>S</b> SMALL: 0 - 7	
<b>M</b> MEDIUM: 22 - 40		<b>M</b> MEDIUM: 7 - 12	
<b>L</b> LARGE: 40 +		<b>L</b> LARGE: 12 +	
FROGS		LIZARDS, SALAMANDERS	
<b>S</b> SMALL: 0 - 2		<b>S</b> SMALL: 0 - 5	
<b>M</b> MEDIUM: 2 - 3.5		<b>M</b> MEDIUM: 5 - 10	
<b>L</b> LARGE: 3.5 +		<b>L</b> LARGE: 10 +	

SNAKES, SALAMANDERS, LIZARDS: TOTAL LENGTH (TL)  
TURTLES: STRAIGHT CARAPACE (SHELL) LENGTH (SCL)  
FROGS: SNOUT TO VENT LENGTH (SVL)

QUESTIONS? SCAN HERE!

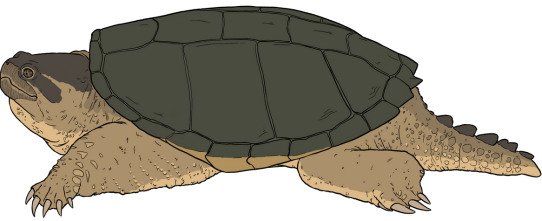


Supported by



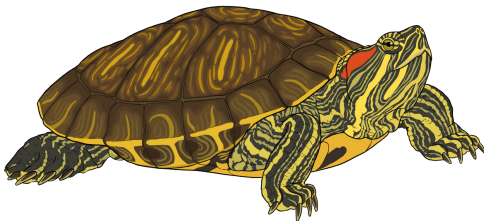
CONCEPT AND PRODUCTION BY: SARA RUANE, MICHELLE E. THOMPSON  
ILLUSTRATIONS, TEXT, AND LAYOUT BY: VALERY ALAS, FREDDY LAZARO,  
MCKENNA QUINTUS, MADELYNN M. SINCLAIR, AND ENYA VAZQUEZ  
CREATED WITH THE DIRECTION OF: KARL BITIKOFER, CARLA BRUTON

**COMMON SNAPPING TURTLE**  
*Chelydra serpentina* **M L**



- Dark brown, olive, gray, or black shell with deeply serrated back margin; large head with slightly hooked beak, muscular legs with long claws; greatly reduced lower shell
- Permanent bodies of water

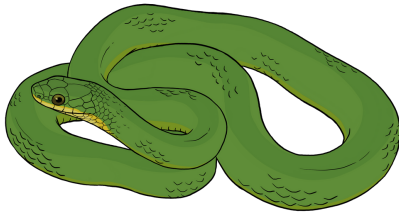
**RED-EARED SLIDER**  
*Trachemys scripta* **M**



- Thick red stripe behind each eye, light yellow stripes across head; olive-green shell with yellow and dark lines
- Rivers, ponds, lakes

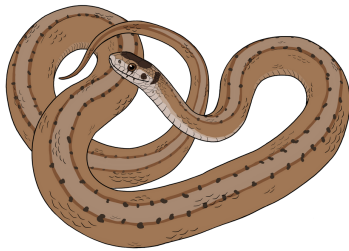
**SMOOTH GREENSNAKE**  
*Opheodrys vernalis* **S**

Greatest Conservation Need



- Uniform bright green, smooth scales with a yellowish-white belly; light yellow underside of head
- Moist prairies, savannas, wet meadows

**DEKAY'S BROWNSNAKE**  
*Storeria dekayi* **S**



- Light brown, gray, or brownish-red colored with two rows of small, dark spots, with faint light stripe running down back
- Moist wooded areas, fields; may also be found in disturbed and urban areas

**ORNATE BOX TURTLE**  
*Terrapene ornata* **S**

State Threatened



- High-domed brown shell with yellow patterned lines, red or brown eyes, yellow-brown skin; fully terrestrial
- Sand deposits, plains, grasslands, savanna

**BLANDING'S TURTLE**  
*Emydoidea blandingii* **M**

State Endangered



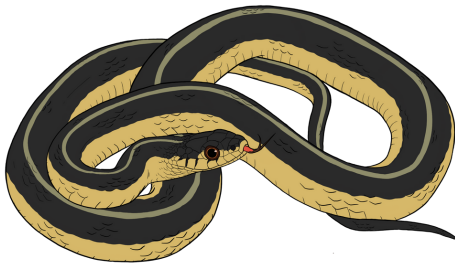
- Dark brown-black shell with light yellow specks, bright yellow throat and chin
- Marshes, lakes, and streams, wetlands interspersed with prairie and savanna

**EASTERN FOXSNAKE**  
*Pantherophis vulpinus* **L**



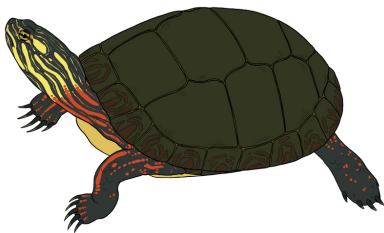
- Yellow to bronze with large, dark blotches on its back, alternating rows of brown spots on either side; head is wider than neck and orange/red-brown in color
- Farmlands, prairies, pastures

**COMMON GARTERSNAKE**  
*Thamnophis sirtalis* **M**



- Dark brown, olive, or black with three yellow-gray stripes; may have red sides
- Marshes, vacant lots, fields, grasslands near water source

**PAINTED TURTLE**  
*Chrysemys picta* **S**



- Olive, brown, or black smooth-edged shell with red markings along edges; head with yellow jagged stripes
- Quiet, shallow, and weedy lakes, ponds, marshes

**NORTHERN WATERSNAKE**  
*Nerodia sipedon* **L**



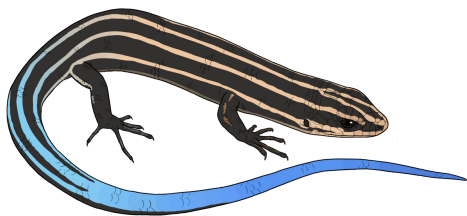
- Colorations vary from brown, gray, red, or brownish-black, ~30 reddish or dark brown blotches and bands; red or brown half-moon shapes on belly scales
- Any aquatic habitat

**SIX-LINED RACERUNNER**  
*Aspidocelis sexlineata* **M**



- Olive to brown body with six light yellow, white, or gray-blue stripes; white, light green, or blue belly; tail blue-green in juveniles
- Hot and dry sandy fields, woodland edges, sand dunes

**FIVE-LINED SKINK**  
*Plestiodon fasciatus* **M**



- Gray, brown, or black, with five light stripes, smooth, shiny scales; olive, brown, or blue tail (especially in juveniles)
- Wooded areas with rocks and abundant logs