

EASTERN MASSASAUGA

Sistrurus catenatus M

SPOTTED SALAMANDER

Ambystoma maculatum M

GREEN FROG

Lithobates clamitans M L

State Endangered

⚠

VENOMOUS

- Uncommon, mostly **extirpated** in Chicagoland area
- Light brown or gray, stout body with "bowtie"-shaped brown blotches
- Heart-shaped head with narrow, white stripe from eye to jaw; cat-eyed pupils
- 2-3 rows of round, dark spots on sides, and 4-7 dark rings around tail; small rattle on tail tip
- Floodplain forests, old fields, marshlands

EASTERN NEWT

Notophthalmus viridescens S

NORTHERN LEOPARD FROG

Lithobates pipiens M

- Olive green with black-bordered red spots, with lighter, yellow belly scattered with black spots; bright orange-red during juvenile stage
- Ponds, small lakes, and streams near forests

- Bronzy green with black and brown blotches
- Dorsolateral folds running from large, circular elevated tympanums
- Shorelines of ponds, marshes, streams

QUESTIONS? SCAN HERE!

AMERICAN TOAD

Anaxyrus americanus M L

GRAY TREEFROG

Dryophytes versicolor S

Supported by

WILDER FOUNDATION

THE WOMEN'S BOARD
of THE FIELD MUSEUM

CME Group

CONCEPT AND PRODUCTION BY: SARA RUANE, MICHELLE E. THOMPSON

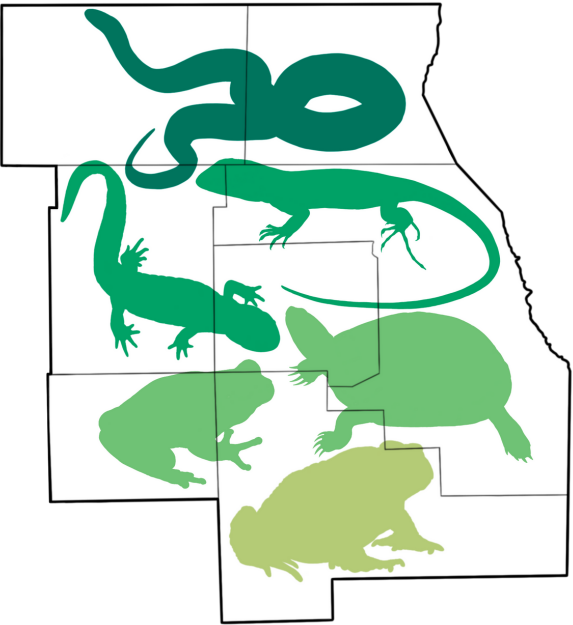
ILLUSTRATIONS, TEXT, AND LAYOUT BY: VALERY ALAS, FREDDY LAZARO, MCKENNA QUINTUS, MADELYNN M. SINCLAIR, AND ENYA VAZQUEZ

CREATED WITH THE DIRECTION OF: KARL BITIKOFER, CARLA BRUTON

- Brown, gray, reddish-brown, or olive colored with numerous dark spots and warts; large protruding gland behind each eye
- Forests or grasslands near shallow sources of water

- Green, gray, or brown warty skin; light spot under each eye with dark stripe from the rear of the eye to the front legs; yellow groin and inner-thigh
- Woodlands or forests near water; arboreal

COMMON
REPTILES &
AMPHIBIANS
OF CHICAGOLAND

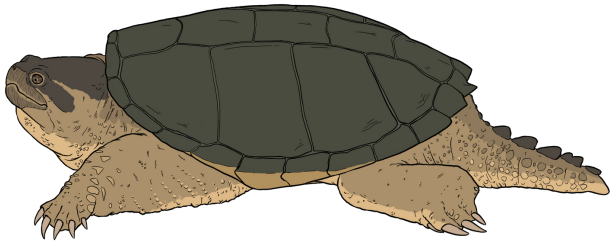


A GUIDE TO THE COMMON REPTILES
AND AMPHIBIANS OF THE ILLINOIS
COUNTIES OF COOK, DuPAGE, LAKE,
McHENRY, KANE, KENDALL,
& WILL



COMMON SNAPPING TURTLE

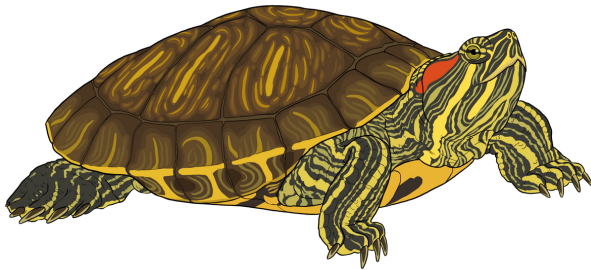
Chelydra serpentina M L



- Dark brown, olive, gray, or black shell with deeply serrated back margin; large head with slightly hooked beak, muscular legs with long claws; greatly reduced lower shell
- Permanent bodies of water

RED-EARED SLIDER

Trachemys scripta M

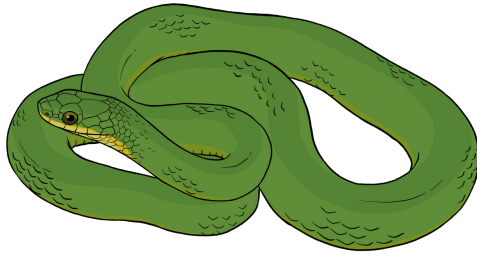


- Thick red stripe behind each eye, light yellow stripes across head; olive-green shell with yellow and dark lines
- Rivers, ponds, lakes

SMOOTH GREENSNAKE

Opheodrys vernalis S

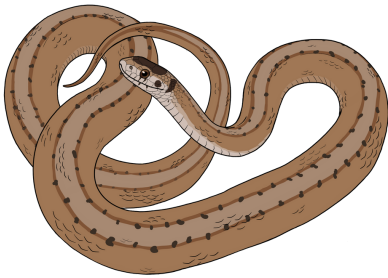
Greatest Conservation Need



- Uniform bright green, smooth scales with a yellowish-white belly; light yellow underside of head
- Moist prairies, savannas, wet meadows

DEKAY'S BROWNSNAKE

Storeria dekayi S



- Light brown, gray, or brownish-red colored with two rows of small, dark spots, with faint light stripe running down back
- Moist wooded areas, fields; may also be found in disturbed and urban areas

ORNATE BOX TURTLE

Terrapene ornata S

State Threatened



- High-domed brown shell with yellow patterned lines, red or brown eyes, yellow-brown skin; fully terrestrial
- Sand deposits, plains, grasslands, savanna

BLANDING'S TURTLE

Emydoidea blandingii M

State Endangered



- Dark brown-black shell with light yellow specks, bright yellow throat and chin
- Marshes, lakes, and streams, wetlands interspersed with prairie and savanna

EASTERN FOXSNAKE

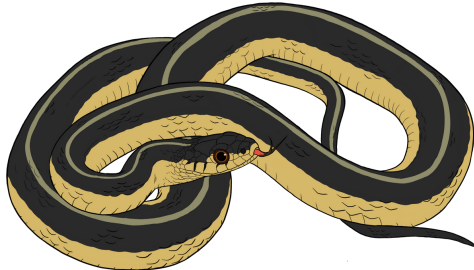
Pantherophis vulpinus L



- Yellow to bronze with large, dark blotches on its back, alternating rows of brown spots on either side; head is wider than neck and orange/red-brown in color
- Farmlands, prairies, pastures

COMMON GARTERSNAKE

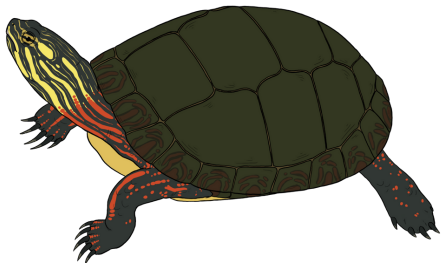
Thamnophis sirtalis M



- Dark brown, olive, or black with three yellow-gray stripes; may have red sides
- Marshes, vacant lots, fields, grasslands near water source

PAINTED TURTLE

Chrysemys picta S



- Olive, brown, or black smooth-edged shell with red markings along edges; head with yellow jagged stripes
- Quiet, shallow, and weedy lakes, ponds, marshes

NORTHERN WATERSNAKE

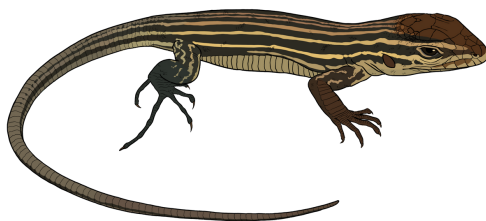
Nerodia sipedon L



- Colorations vary from brown, gray, red, or brownish-black, ~30 reddish or dark brown blotches and bands; red or brown half-moon shapes on belly scales
- Any aquatic habitat

SIX-LINED RACERUNNER

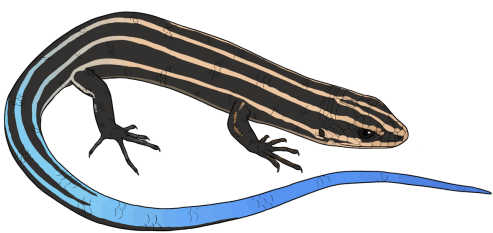
Aspidoscelis sexlineata M



- Olive to brown body with six light yellow, white, or gray-blue stripes; white, light green, or blue belly; tail blue-green in juveniles
- Hot and dry sandy fields, woodland edges, sand dunes

FIVE-LINED SKINK

Plestiodon fasciatus M



- Gray, brown, or black, with five light stripes, smooth, shiny scales; olive, brown, or blue tail (especially in juveniles)
- Wooded areas with rocks and abundant logs